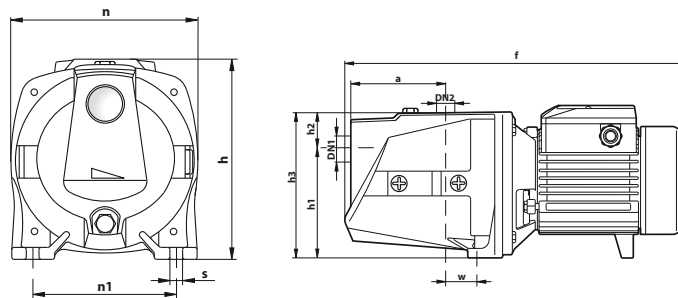


# ELECTRIC PUMPS JSW SERIES

*"JET" self-priming*



Model	KW	Hp	Intake inlet	Delivery Head intake	CODE	€
Single-phase	0.37	0.50	1	1	<b>P-JSWm 1C</b>	<b>144.00</b>
Three-phase	0.50	0.70	1	1	<b>P-JSW 1B</b>	<b>161.00</b>
Single-phase	0.50	0.70	1	1	<b>P-JSWm 1B</b>	<b>146.00</b>
Three-phase	0.60	0.85	1	1	<b>P-JSW 1A</b>	<b>170.00</b>
Single-phase	0.60	0.85	1	1	<b>P-JSWm 1A</b>	<b>155.00</b>
Three-phase	0.75	1	1	1	<b>P-JSW 2C</b>	<b>187.00</b>
Single-phase	0.75	1	1	1	<b>P-JSWm 2C</b>	<b>172.00</b>
Three-phase	0.90	1.25	1	1	<b>P-JSW 2B</b>	<b>199.00</b>
Single-phase	0.90	1.25	1	1	<b>P-JSWm 2B</b>	<b>184.00</b>
Three-phase	1.1	1.5	1	1	<b>P-JSW 2A</b>	<b>205.00</b>

Pumped liquid: clean water  
Use: domestic  
Type: surface  
Technique: self-priming

#### PERFORMANCE RANGE

- Flow rate up to (3 m<sup>3</sup>/h) 50 l/min
- Head up to 47 m

#### LIMITS OF USE

- Static head up to (HS)9 m
- Temperature of the liquid from -10 °C up to +40

°C

- Room temperature up to +40 °C
- Max pressure in the pump body 6 bar
- Continuous operation S1

Prices valid at the time of printing of the catalogue, and subject to changes by the manufacturer. For up-to-date prices and applied discounts on the products listed on this page, please contact our sales office Tel. 02 89231200 - faet@faet.it - Fax 02 89231230