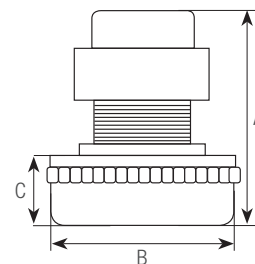


# MOTORS FOR WET / DRY VACUUM CLEANERS

Peripheral, single-phase 220/240 - 50/60Hz



## ▶ TWO-STAGE



SPARES: **A - C1**

POWER NOM. W	POWER I/s	HEIGHT TOT. A	Ø B	BOX SUCTION C	CODE	€
850	1000	171	144	66.5	<b>3303001F</b>	<b>54,87</b>

**AMETEK** - MODEL 069203005.01 - new code. 61109.60202

SPARES: **B - C1**



POWER NOM. W	HEIGHT TOT. A	Ø B	BOX SUCTION C	CODE	€
800	167	144	61	<b>3303001</b>	<b>74,70</b>

**AMETEK** - MODEL 069203002

SPARES: **B - C1**



POWER NOM. W	HEIGHT TOT. A	Ø B	BOX SUCTION C	CODE	€
1000	175	144	61	<b>3303002</b>	<b>77,01</b>



SPARES: **C2**

POWER NOM. W	HEIGHT TOT. A	Ø B	BOX SUCTION C	CODE	€
1500	245	190	102	<b>3303006*</b>	<b>340,00</b>

\* limited stocks

### SPARES:

**A** Pair of spare brush holders for vacuum cleaner

**B** Spare brush holder  
Dimensions: 6,3x11,3x43

**C** Shock-absorber rings in rubber

CODE	€/PAIR
<b>3303100F</b>	<b>15,40</b>

CODE	€
<b>3303100</b>	<b>19,80</b>

Ø	CODE	€
145	<b>3303007</b>	<b>5,00 C1</b>
190	<b>3303008</b>	<b>8,00 C2</b>