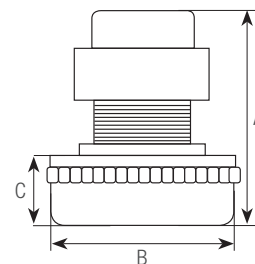


# MOTORS FOR WET / DRY VACUUM CLEANERS

*Tangential, single-phase 220/240 - 50/60Hz*



## ► THREE-STAGE

**AMETEK** - MODEL 069100003 - new code. 61109.60157 (36 volt motor)

SPARES: **C1**



POWER NOM. W	HEIGHT TOT. A	Ø B	BOX SUCTION C	CODE	€
600	198	144	94	<b>330302136</b>	<b>135,00</b>

**AMETEK** - MODEL 6426SA

SPARES: **C1**



POWER NOM. W	HEIGHT TOT. A	Ø B	BOX SUCTION C	CODE	€
1400	208	144	101	<b>3303037</b>	<b>150,00</b>

**LAMB** - MODEL 117123-00



POWER NOM. W	POWER MAX. W	VACUUM H20 mm	FLOW RATE I/s	AIRWATT	HEIGHT TOT. A	Ø B	BOX SUCTION C	CODE	€
1150	1400	3500	45	448	204	146	75	<b>3303038</b>	<b>333,00</b>

**LAMB** - MODEL 117502-12/13



POWER NOM. W	POWER MAX. W	VACUUM H20 mm	FLOW RATE I/s	AIRWATT	HEIGHT TOT. A	Ø B	BOX SUCTION C	CODE	€
1400	1600	3700	48	521	224	182	68	<b>3303039</b>	<b>760,00</b>

SPARES on page 305