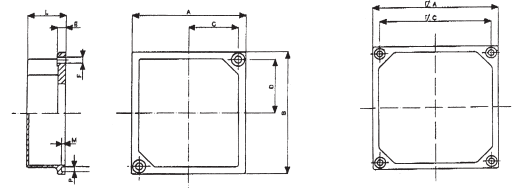
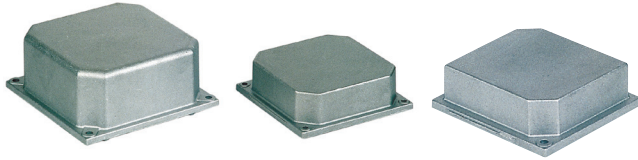


TERMINAL BOARD COVERS IN DIE-CAST ALUMINIUM

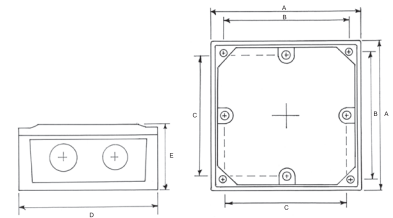
For MEC series MOTORS



MOTOR SIZE	A	B	C	D	E	F	L	M	P	CODE	€/pc
MEC 63-71-80	74	80	32	35	5.5	4.5	25	2.3	3.5	3308070	2,56
MEC 90-100-112	98	98	44	44	6	4.5	30	2.3	3.5	3308071	3,93
MEC 132	118	118	53	53	5	5.5	50	2.3	3.5	3308072	7,91

Packages: Single items

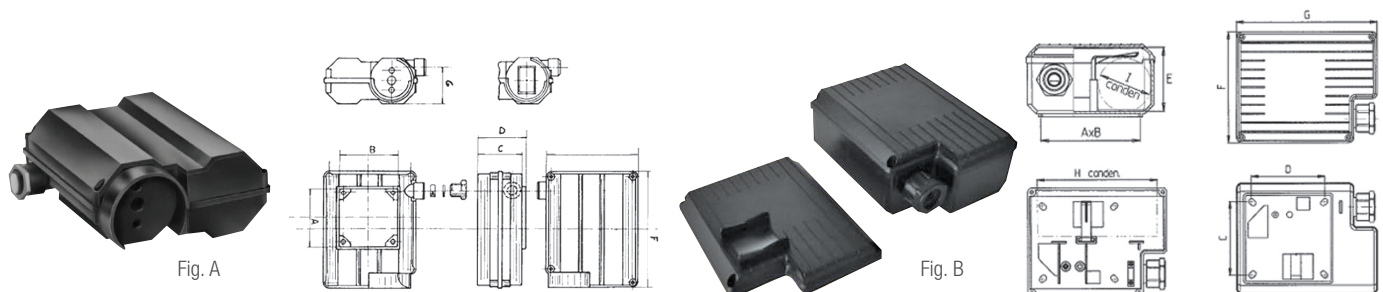
Each base cover is made up of 1 base + 1 cover
+ 2 gaskets, and is prepared for the fitting of
1 x PG 16 cable gland and 1 x PG 13,5 cable gland



MOTOR SIZE	A	B	C	D	E	CODE	€/pc
MEC 63 - 71 - 80 - 90	89	70	65	89	48	3308097	19,28
MEC 100 - 112 - 132	114	95	90	114	54	3308098	22,99

CAPACITOR HOUSING AND SWITCH HOUSING IN BLACK NYLON

For MEC 63 - 112 SERIES motors



CODE	FIGURE	A	B	C	D	E	F	G	H	I	CODE	€/pc
MEC 63/71	Fig. A	71	71	48	55	116	124	38	-	-	3309771	8,86
MEC 80/112	Fig. A	86	86	60	66	127	157	44	-	-	3309772	8,86
MEC 63/71	Fig. B	74	79	60	60	42	87	117	98	40	3309773	8,86
MEC 80/112	Fig. B	85	85	73	73	54	110	141	120	45	3309774	8,86