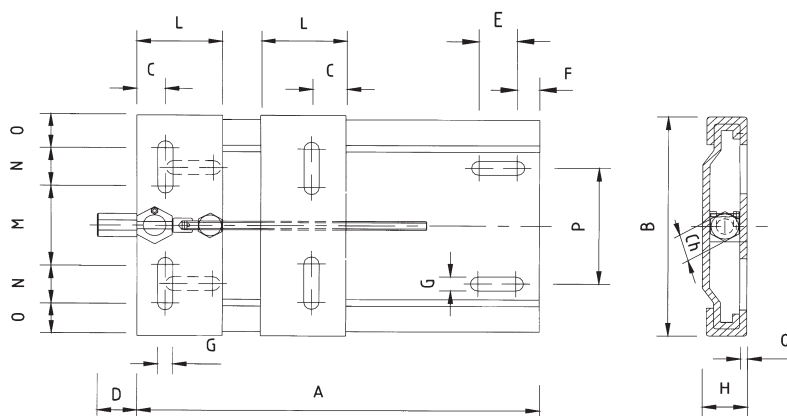
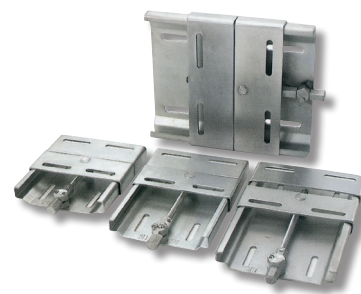


SLIDES FOR BELT TENSIONING FOR ELECTRIC MOTORS



TECHNICAL DATA:

Type	A	B	C	Ch	D	E	F	G	H	L	M	N	O	P	Q	kg	CODE	€/pc
SMA 210	210	195	20	19	24	50	25	10,5	34	70	43	50	26	98	3	2,6	3304901	25,76
SMA 270	270	195	20	19	24	50	25	10,5	34	70	43	50	26	98	3	3,0	3304902	29,62
SMA 307	307	213	20	9	24	50	25	10,5	34	70	65	50	24	108	3	3,2	3304903	38,16
SMA 340	340	290	27	22	27	62	30	12	40	95	90	62	38	165	4	6,3	3304904	63,83

TYPE	MOTOR SIZE	2-POLE MOTORS	4-POLE MOTORS
SMA 210	63 - 80	0,25 to 1,1 kW	0,18 to 0,75 kW
SMA 270	63 - 112	0,25 to 5,5 kW	0,18 to 4 kW
SMA 307	90 - 112	1,5 to 5,5 kW	1,1 to 4 kW
SMA 340	90 - 132	1,5 to 7,5 kW	1,1 to 7,5 kW

These belt-tensioning slides are made of galvanised steel plating, in order to give the slide greater protection against oxidation and corrosion.