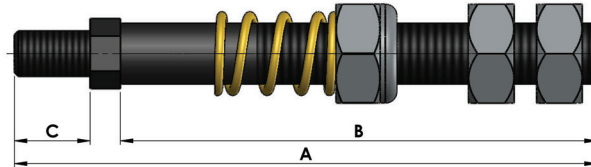
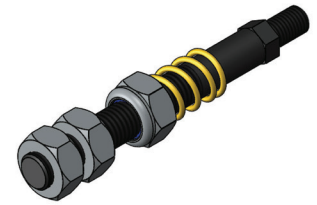


# SPARES FOR ELECTRIC BRAKES TENSION BARS



SIZE	DIMEN.*	FAET SPRING CODE	CODE	€
MEC56-T60	A=68 X 6MA	.12-MOLLA28	<b>0901221</b>	<b>6,93</b>
MEC63-T70	B=68 X 8MA C=10 X 6MA	.12-SPRING02	<b>0901224</b>	<b>8,08</b>
MEC71-T80	B=73 X 8MA C=11 X 6MA	.12-SPRING26	<b>0901227</b>	<b>9,24</b>
MEC80-T90	B=82 X 10MA C=15 X 8MA	.12-SPRING20	<b>0901228</b>	<b>8,08</b>
MEC90-T100	B=82 X 10MA C=15 X 8MA	.12-SPRING20	<b>0901233</b>	<b>10,39</b>
MEC100-T110	A=105 X 10MA	.12-SPRING19	<b>0901236</b>	<b>8,08</b>
MEC112	A=110 X 10MA	.12-SPRING19	<b>0901231</b>	<b>8,08</b>
T120	A=120 X 12MA	.12-SPRING09	<b>0901241</b>	<b>9,24</b>
MEC132-T140 MEC160-T160	A=130 X 12MA	.12-SPRING09	<b>0901242</b>	<b>9,24</b>
T70D-T080D	A=95 X 8MA	.12-SPRING03	<b>0901225</b>	<b>8,08</b>
T90D-T100D T110-D	A=125 X 10MA	.12-SPRING104	<b>0901230</b>	<b>8,08</b>
T120-D	A=140 X 12MA	.12-SPRING20 .12-SPRING01	<b>0901232</b>	<b>11,55</b>
T140D - T160D MEC132D - EC160D	A=145 X 12MA	.12-SPRING09 .12-SPRING01	<b>0901234</b>	<b>11,55</b>
T180D - MEC180D	A=195 X 14MA	.12-SPRING09 .12-SPRING11 .12-SPRING12	<b>0901238</b>	<b>13,86</b>
MEC100T - T110T	A=145 X 10MA	.12-SPRING104 .12-SPRING19	<b>0901240</b>	<b>8,08</b>
MEC132T - T140T MEC160T - T160T	A=175 X 12MA	.12-SPRING01 .12-SPRING09	<b>0901235</b>	<b>11,55</b>

N.B. The drawing and figure are purely indicative.  
\*Tension bar length x thread diameter