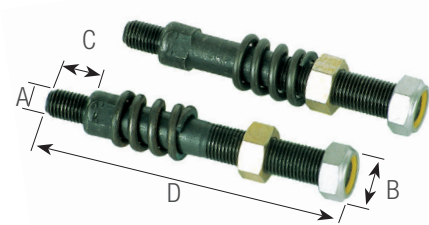
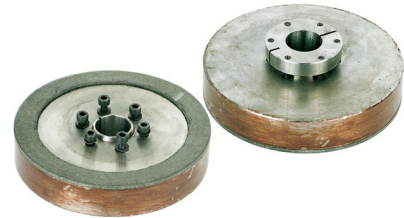


# ORIGINAL SPARE PARTS FOR ELECTRIC BRAKES MGM

## FLY WHEEL DISCS SERIES CFPV

MOTOR SIZE	Ø External mm	CODE	€
MEC 71	105	<b>3312041</b>	<b>105,63</b>
MEC 80	130	<b>3312042</b>	<b>127,19</b>
MEC 90	145	<b>3312043</b>	<b>135,81</b>
MEC 100	163	<b>3312044</b>	<b>150,90</b>
MEC 112	185	<b>3312045</b>	<b>181,08</b>
MEC 132	220	<b>3312046</b>	<b>217,73</b>

\* While stocks last



## TENSION BARS

### SERIES CF - CFZ

MOTOR SIZE	A	B	C	D	CODE	€
MEC 71 = MEC 80	6	8	10	76	<b>3312050</b>	<b>10,78</b>
MEC 90 = MEC 100	8	10	11	84	<b>3312051</b>	<b>10,78</b>
MEC 112 = MEC 132						
MEC 160	10	11	15	101	<b>3312053</b>	<b>15,44</b>
MEC 180	12	14	15	125	<b>3312054</b>	<b>15,44</b>
MEC 200	12	14	15	125	<b>3312055</b>	<b>15,44</b>

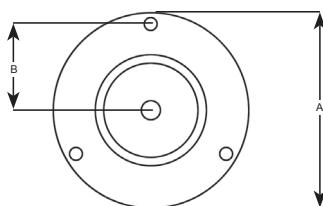
### SERIES CFPV

MOTOR SIZE	A	B	C	D	CODE	€
MEC 71 = MEC 80	7	8	12	101	<b>3312060</b>	<b>10,78</b>
MEC 90 = MEC 100	8	10	11	110	<b>3312061</b>	<b>10,78</b>
MEC 112 = MEC 132						
MEC 160	12	14	15	125	<b>3312063</b>	<b>15,44</b>
MEC 180	12	14	15	170	<b>3312064</b>	<b>15,44</b>
MEC 200	12	14	16	170	<b>3312065</b>	<b>15,44</b>

Packages: Single items N.B.: By request complete brake units and self-braking motors can also be supplied.

## MAGNETS COMPATIBLE WITH MOTORS: MGM

220-380V



Motor Size	A	B	CODE*	€
MEC 71	137	60,5	<b>0901270</b>	<b>35,00</b>
MEC 90	174	79,5	<b>0901272</b>	<b>45,00</b>

\* While stocks last