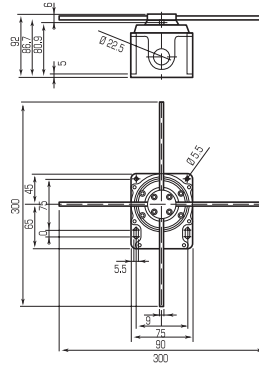


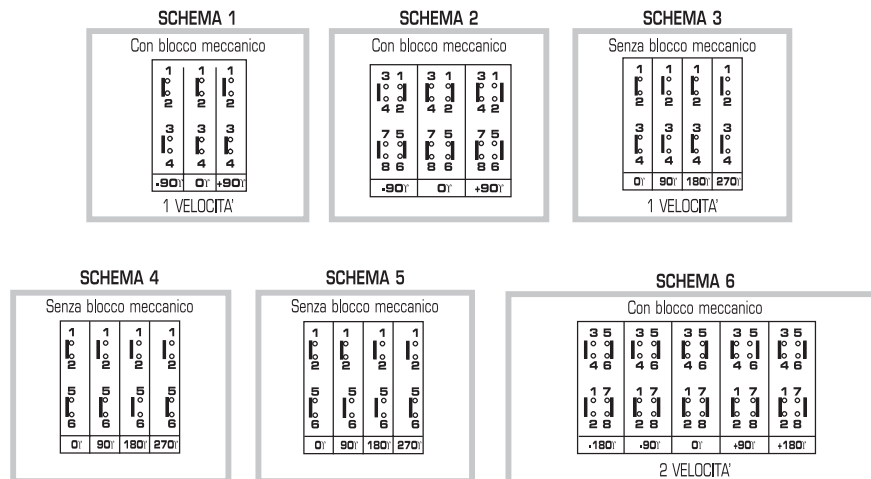
# LIMIT SWITCHES - POSITION SWITCH SERIES FCR

For auxiliary circuits



| DESCRIPTION                             | N° DIAGRAM | CODE            | €/pc          |
|---|------------|-----------------|---------------|
| CORNER LIMIT SWITCH 2 CONTACTS          | 1          | <b>3310135*</b> | <b>140.94</b> |
| CORNER LIMIT SWITCH 4 CONTACTS          | 2          | <b>3310136*</b> | <b>197.60</b> |
| CORNER LIMIT SWITCH 2 CONTACTS          | 3          | <b>3310137*</b> | <b>143.91</b> |
| CORNER LIMIT SWITCH 2 CONTACTS          | 4          | <b>3310138*</b> | <b>143.91</b> |
| CORNER LIMIT SWITCH 2 CONTACTS          | 5          | <b>3310139*</b> | <b>256.96</b> |
| CORNER LIMIT SWITCH 4 CONTACTS 2 SPEEDS | 6          | <b>3310140*</b> | <b>348.53</b> |

\*limited stocks



**GENERAL CHARACTERISTICS:**  
 Case in self-extinguishing thermoplastic material VO UL94  
 Protection grade IP 65 in accordance with IEC/EN60529  
 Room temperature: operation -25 °C +55 °C, storage -30 °C +70 °C

**ELECTRICAL CHARACTERISTICS:**  
 Compliant with standards IEC/EN60947-3, UL508  
 Certifications IMQ, CCC, GOST, UL

Rated insulation voltage  $U_i$   
 Rated thermal current  $I_{th}$   
 Rated operating current:  
 AC21A - AC22  
 AAC23A 3 phases 3 poles

|           |        |
|-----------|--------|
| V         | 690    |
| A         | 3      |
| 690V A    | 16     |
| 230V A/kW | 13/4   |
| 400V A/kW | 13/7.5 |