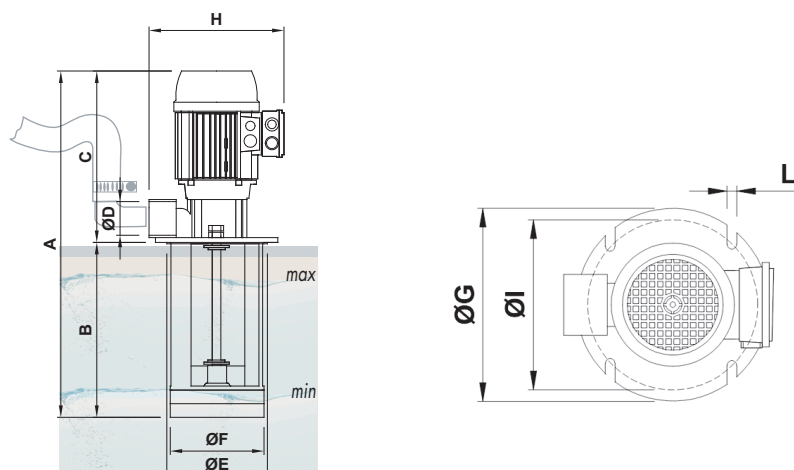


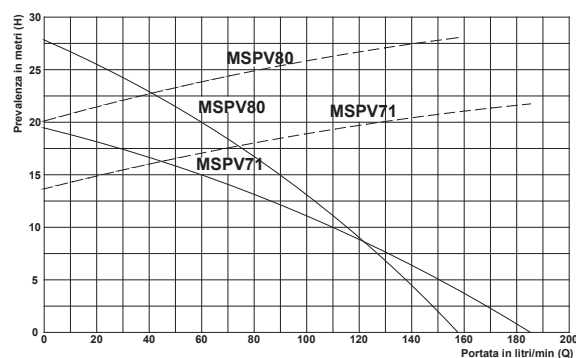
SUBMERSIBLE MOTOR-DRIVEN PUMPS SERIES MSPV

Three-phase motor 230/400V 50Hz



TYPE	KW	C	Ø D Gas	Ø E	Ø F	Ø G	H	Ø I	Ø L	A	B	CODE	€
MSPV 71	1.34	270	1-1/4"	139	138	178	215	160	9	500	230	0501401	684.00
										570	300	0501402	720.10
										650	380	0501403	756.20
MSPV 80	1.86	300	1-1/4"	139	138	178	230	160	9	560	260	0501404	855.00
										630	330	0501405	900.20
										710	410	0501406	944.30

Packs containing individual pieces, measurements in mm



FLOW RATE CURVES The data indicated in the diagrams refer to a viscosity not exceeding 5 CST 20°C

These are suitable for transferring liquids containing impurities of dimensions up to 3 mm.

The hydraulic components: impeller, scroll and pump body in PBT, mean that it can be used with emulsions, and oily substances in general, with viscosity not exceeding 21CST (3° Engel).

The temperature of the liquid must not exceed 90°C.

They are ordinarily used on:

- machine tools (milling machines - lathes - workstations)
- machines for glass work
- printing machines
- filtration systems
- heating and air conditioning systems