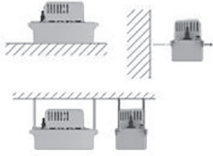
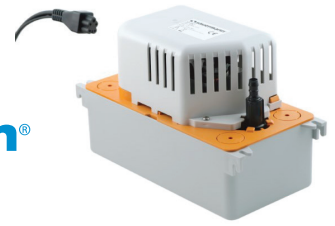
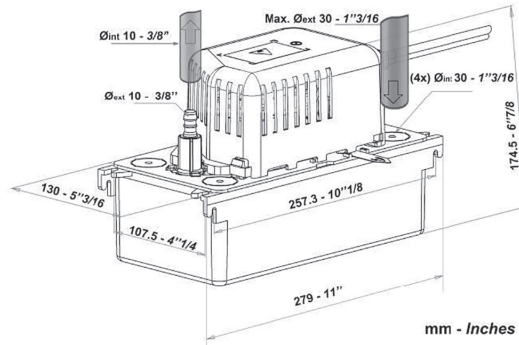


CENTRIFUGAL PUMP SI-82

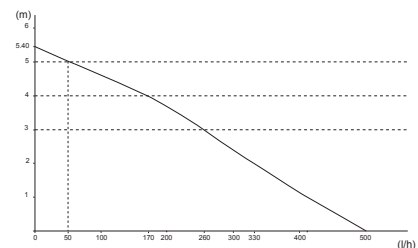
Examples of installation



Max flow rate	Max delivery head	Max pressure	V	Hz	W	A	kg	COD	€
500 l/h	5.0 M	5.4 M	230~	50	70	0.67	2.5	0504042	147.00

TABLE OF EFFECTIVE FLOW RATES (L/H)

Height of vertical delivery	Tot. length of the pipe (Øint. 10 mm , 3/8")			
	5 M	10 M	20 M	30 M
1 M	380	300	240	190
2 M	310	260	200	150
3 M	240	200	145	110
4 M	150	130	80	60
5 M	30	20	0	0



The Si-82 pump is conceived to be easily installed in various environmental conditions. With a flow rate of 500 l/h, the Si-82 is suitable for both air conditioning and refrigeration units. Robustly constructed, the Si-82 supports dirty condensation at high temperatures, and acidic (pH>2.5), made by gas condensing boilers.

APPLICATIONS

Column air conditioners, Multi cassette intake, Ducted systems, Condensing boilers, High efficiency gas boilers, Refrigerated display cases, Evaporators

ADVANTAGES

- High performance:
 - It can discharge condensation up to a height of 5 m
 - Up to 500 l/h, for brief periods of operation
 - Low noise level - silent operation
 - Versatility of installation. The pump can be installed on the ground, on a wall, or suspended from the ceiling.
 - Flexible Easily removable basin and reversible pump to allow installation either on the right or the left of the unit, to allow condensation to come out.
 - Simple electrical connections
- New "plug-in" type plug to facilitate installation and maintenance.

- Simple plumbing connections
- New ¼ turn check valve, designed to facilitate the connection of PVC pipes with int. diameter of 10 mm (3/8")
- 4 condensation entry holes Ø 30 mm (1"-3/16)
- High resistance:
 - Float resistant to acids and fuel residue
 - Shockproof mechanical structure

TECHNICAL CHARACTERISTICS

Noise level at 1 m: ≤ 45 dBA (Measured in the Sauerermann sound laboratory with pump in water)
 Measured levels On : 53 mm, Off : 42 mm, Alarm : 64 mm
 NC 4 A resistive - 250 V alarm contact
 Maximum condensation temperature 65 °C, 80 °C for brief periods
 Maximum acidity of condensation pH> 2.5 (gas condensing boilers)
 Trip switch (overheating) 105 °C (automatic reset)
 Operating cycle 30%: 3s ON – 7s OFF
 Protection IP20
 CE and EAC safety standards
 Compliant with RoHS directive and RAEE directive